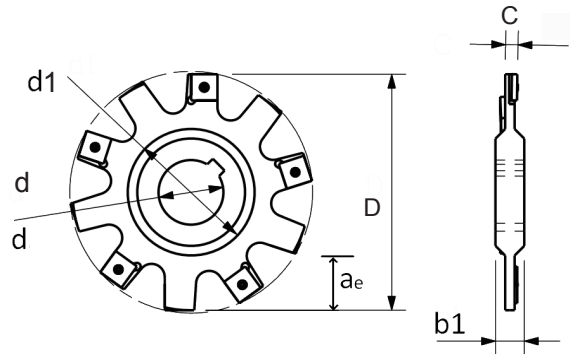
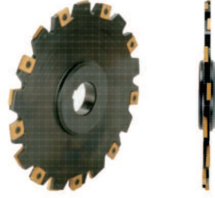




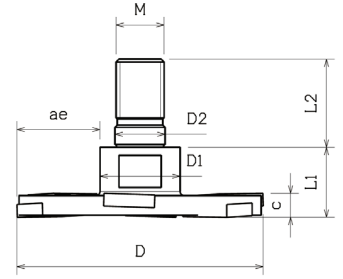
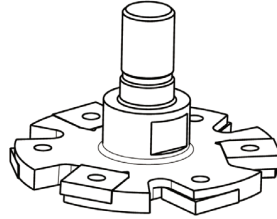
# SIDE MILLS 側銑刀



Order No.	Insert	Dimensions								Clamping Screw	Wrench
		Right / Left	D	ae	b1	C	d1	d	d (inch)		
TSSN11020-08004	SNHX1102	80	18	12	4	44	27	1"	10	CSA30035S	DBIT-T7
TSSN11020-10004		100	27	12	4	45	27	1"	12		
TSSN11020-12504		125	33	12	4	58	40	1-1/2"	14		
TSSN11020-16004		160	46	12	4	68	40	1-1/2"	18		
TSSN11030-08005	SNHX1103	80	18	12	5	44	27	1"	10	CSA30042	
TSSN11030-10005		100	27	12	5	45	27	1"	12		
TSSN11030-12505		125	33	12	5	55	40	1-1/2"	14		
TSSN11030-16005		160	46	12	5	68	40	1-1/2"	18		
TSSN12030-10006	SNHX1203	100	27	12	6	45	27	1"	10	CSA40051	DBIT-T15
TSSN12030-12506		125	33	12	6	55	40	1-1/2"	12		
TSSN12030-16006		160	46	12	6	68	40	1-1/2"	16		
TSSN12030-20006		200	61	12	6	78	50	2"	18		
TSSN12030-25006		250	82	12	6	86	50	2"	24		
TSSN12040-10007	SNHX1204	100	27	12	7	45	27	1"	10	CSA40059	
TSSN12040-12507		125	33	12	7	55	40	1-1/2"	12		
TSSN12040-16007		160	46	12	7	68	40	1-1/2"	16		
TSSN12040-20007		200	61	12	7	78	61	2"	18		
TSSN12040-25007		250	82	12	7	86	82	2"	24		
TSSN12050-10010	SNHX1205	100	27	12	10	45	27	1"	10	CSA40079	
TSSN12050-12510		125	33	12	10	55	40	1-1/2"	12		
TSSN12050-16010		160	46	12	10	68	40	1-1/2"	16		
TSSN12050-20010		200	61	12	10	78	50	2"	18		
TSSN12050-25010		250	82	12	10	86	50	2"	24		



# SIDE MILLS 側銑刀



Inser tyoe 適用刀片: SNHX1102

Order No.	Dimensions								
Right / Left	D	c	ae	D1	D2	M	L1	L2	I No.
MICSN04004	40	4	12	12	8.5	M8	15.5	17	4
MICSN05004	50	4	16	16	10.5	M10	15.5	19	6
MICSN06304	63	4	20	20	12.5	M12	15.5	22	8
MICSN08004	80	4	26	25	17	M16	15.5	23	10

Inser tyoe 適用刀片: SNHX1103

Order No.	Dimensions								
Right / Left	D	c	ae	D1	D2	M	L1	L2	I No.
MICSN04005	40	5	12	12	8.5	M8	16.5	17	4
MICSN05005	50	5	16	16	10.5	M10	16.5	19	6
MICSN06305	63	5	20	20	12.5	M12	16.5	22	8
MICSN08005	80	5	26	25	17	M16	16.5	23	10

Inser tyoe 適用刀片: SNHX1203

Order No.	Dimensions								
Right / Left	D	c	ae	D1	D2	M	L1	L2	I No.
MICSN05006	40	6	16	16	10.5	M10	17.5	19	4
MICSN06306	50	6	20	20	12.5	M12	17.5	22	6
MICSN08006	63	6	26	25	17	M16	17.5	23	8

Inser tyoe 適用刀片: SNHX1204

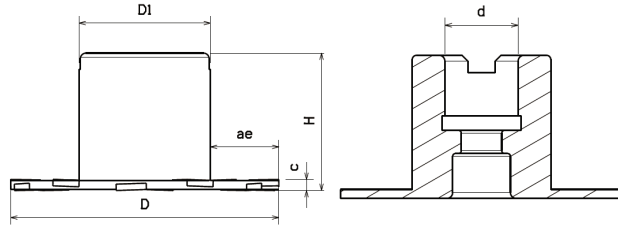
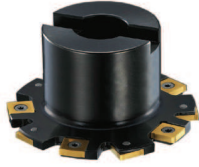
Order No.	Dimensions								
Right / Left	D	c	ae	D1	D2	M	L1	L2	I No.
MICSN05007	50	7	16	16	10.5	M10	18.5	19	4
MICSN06307	63	7	20	20	12.5	M12	18.5	22	6
MICSN08007	80	7	26	25	17	M16	18.5	23	8

Inser tyoe 適用刀片: SNHX1205

Order No.	Dimensions								
Right / Left	D	c	ae	D1	D2	M	L1	L2	I No.
MICSN05008	50	8	16	16	10.5	M10	19.5	19	4
MICSN06308	63	8	20	20	12.5	M12	19.5	22	6
MICSN08008	80	8	26	25	17	M16	19.5	23	8



# SIDE MILLS 側銑刀



Inser tyoe 適用刀片:SNHX1102

Order No.	Dimensions								
	Right / Left	D	c	ae	H	D1	d	d(inch)	I No.
NTSSN10004		100	4	25	50	48	27	1"	12
NTSSN12504		125	4	32	50	58	32	1-1/4"	14
NTSSN16004		160	4	43	50	70	40	1-1/2"	18
NTSSN20004		200	4	55	50	88	40	1-1/2"	20

Inser tyoe 適用刀片:SNHX1103

NTSSN10005		100	5	25	50	48	27	1"	12
NTSSN12505		125	5	32	50	58	32	1-1/4"	14
NTSSN16005		160	5	43	50	70	40	1-1/2"	18
NTSSN20005		200	5	55	50	88	40	1-1/2"	20

Inser tyoe 適用刀片:SNHX1203

NTSSN10006		100	6	25	50	48	27	1"	10
NTSSN12506		125	6	32	50	58	32	1-1/4"	12
NTSSN16006		160	6	43	50	70	40	1-1/2"	16
NTSSN20006		200	6	55	50	88	40	1-1/2"	18

Inser tyoe 適用刀片:SNHX1204

NTSSN10007		100	7	25	50	48	27	1"	10
NTSSN12507		125	7	32	50	58	32	1-1/4"	12
NTSSN16007		160	7	43	50	70	40	1-1/2"	16
NTSSN20007		200	7	55	50	88	40	1-1/2"	18

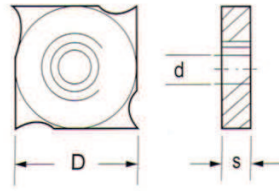
Inser tyoe 適用刀片:SNHX1205

NTSSN10010		100	10	25	50	48	27	1"	10
NTSSN12510		125	10	32	50	58	32	1-1/4"	12
NTSSN16010		160	10	43	50	70	40	1-1/2"	16
NTSSN20010		200	10	55	50	88	40	1-1/2"	18

Inser tyoe 適用刀片:SNHX1207

NTSSN10012		100	12	25	50	48	27	1"	10
NTSSN12512		125	12	32	50	58	32	1-1/4"	12
NTSSN16012		160	12	43	50	70	40	1-1/2"	16
NTSSN20012		200	12	55	50	88	40	1-1/2"	18

**SNHX**  
側銑刀片



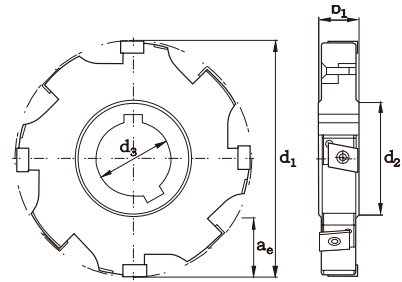
Specification

Insert	s	D	c	AK100	AK120	TM150	TH200
SNHX1102-G	2.3	11.0	4	●	●		
SNHX1102-H					●	●	●
SNHX1103-G	2.7	11.0	5	●	●		
SNHX1103-H						●	●
SNHX11032-G	3.2	11.0	5.5-6				
SNHX11032-H						●	
SNHX1203-G	3.2	12.7	6	●	●		
SNHX1203-H					●	●	●
SNHX1204-G	4.0	12.7	7		●		
SNHX1204-H				●		●	●
SNHX12045-G	4.5	12.7	7.5-8		●		
SNHX12045-H				●	●	●	●
SNHX1205-G	5.4	12.7	9	●	●		●
SNHX1205-H						●	●
SNHX1207-G	7.0	12.7	10		●		
SNHX1207-H						●	●

-G : general cutting    -H : heavy cutting  
 ◎ : first choice    ○ : second choice    ● : stock



# SIDE MILLS 側銑刀



Recommended Inserts 刀片建議品牌: KENAMETAL

Insert: CNHU1005 Acceptable Customized Thickness: 13~17 mm

Order No.	Dimensions								
	Right / Left	d1	ap	ae	D1	d2	d3	d3(inch)	I No.
TSCN10-08014		80	14	18	14	44	27	1"	6
TSCN10-10014		100	14	26	14	48	27	1"	8
TSCN10-12514		125	14	35	14	55	32	1-1/4"	10
TSCN10-16014		160	14	46	14	68	40	1-1/2"	12
TSCN10-20014		200	14	61	14	78	50	2"	16
TSCN10-25014		250	14	82	14	86	50	2"	20

Insert: CNHU1205 Acceptable Customized Thickness: 17~21 mm

Order No.	Dimensions								
	Right / Left	d1	ap	ae	D1	d2	d3	d3(inch)	I No.
TSCN12-08018		80	18	18	18	44	27	1"	6
TSCN12-10018		100	18	26	18	48	27	1"	8
TSCN12-12518		125	18	35	18	55	32	1-1/4"	10
TSCN12-16018		160	18	46	18	68	40	1-1/2"	12
TSCN12-20018		200	18	61	18	78	50	2"	16
TSCN12-25018		250	18	82	18	86	50	2"	20

Insert: CNHU1606 Acceptable Customized Thickness: 21~30 mm

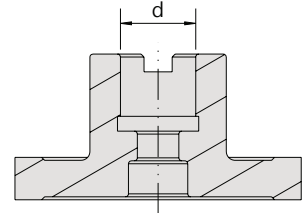
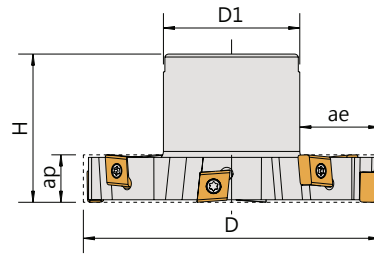
Order No.	Dimensions								
	Right / Left	d1	ap	ae	D1	d2	d3	d3(inch)	I No.
TSCN16-08022		80	22	18	22	44	27	1"	6
TSCN16-10022		100	22	26	22	48	27	1"	8
TSCN16-12522		125	22	35	22	55	32	1-1/4"	10
TSCN16-16022		160	22	46	22	68	40	1-1/2"	12
TSCN16-20022		200	22	61	22	78	50	2"	16
TSCN16-25022		250	22	82	22	86	50	2"	20

Order example: TSCN10-08014 x1"

ap (mm)	Insert	L1 (mm)	Screw	Wrench
13 ~ 17	CNHU1005 / CNHQ1005	10.0	CS40110	DBIT-T15
17 ~ 21	CNHU1205 / CNHQ1205	12.7	CS40110	DBIT-T15
21 ~ 30	CNHU1606 / CNHQ1606	16.0	CS50130	DBIT-T20



# SIDE MILLS 側銑刀



Recommended Insert : 刀片建議品牌 : KENAMETAL,MR  
 Insert : CNHU1005 Customized Thickness 訂製厚度: 13-17mm

Order No.	Dimensions								
	Right / Left	D	ap	ae	H	D1	d	d (inch)	I No.
NTSCN10-08016		80	16	15	50	48	27	1"	6
NTSCN10-10016		100	16	25	50	48	27	1"	8
NTSCN10-12516		125	16	32	50	58	32	1-1/4"	10
NTSCN10-16016		160	16	43	50	70	40	1-1/2"	12
NTSCN10-20016		200	16	55	50	88	40	1-1/2"	16
NTSCN10-25016		250	16	68	50	112	60	2	20

Insert : CNHU1205 Customized Thickness 訂製厚度: 17-21mm

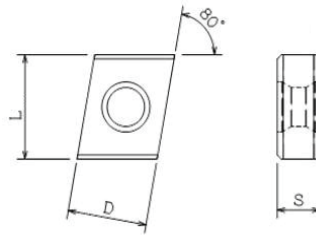
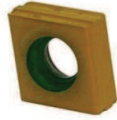
Order No.	Dimensions								
	Right / Left	D	ap	ae	H	D1	d	d (inch)	I No.
NTSCN12-08020		80	20	15	50	48	27	1"	6
NTSCN12-10020		100	20	25	50	48	27	1"	8
NTSCN12-12520		125	20	32	50	58	32	1-1/4"	10
NTSCN12-16020		160	20	43	50	70	40	1-1/2"	12
NTSCN12-20020		200	20	55	50	88	40	1-1/2"	16
NTSCN12-25020		250	20	68	50	112	60	2	20

Insert : CNHU1606 Customized Thickness 訂製厚度: 21-30mm

Order No.	Dimensions								
	Right / Left	D	ap	ae	H	D1	d	d (inch)	I No.
NTSCN16-08024		80	24	15	50	48	27	1"	6
NTSCN16-10024		100	24	25	50	48	27	1"	8
NTSCN16-12524		125	24	32	50	58	32	1-1/4"	10
NTSCN16-16024		160	24	43	50	70	40	1-1/2"	12
NTSCN16-20024		200	24	55	50	88	40	1-1/2"	16
NTSCN16-25024		250	24	68	50	112	60	2	20

Order example: NTSCN10-08014x1"

Type	Insert	Screw	Wrench
NTSCN10	CNHU1005	CS40110	DBIT-T15
NTSCN12	CNHU1205	CS40110	DBIT-T15
NTSCN16	CNHU1606	CS50130	DBIT-T20



### Specification

P						○		◎
M						○	◎	
K						◎		
N								
S						○		
Insert	L	D	S	r	c	AK100	TM150	TH200
CNHU1005	10.00	10.06	5.4	-	0.2		●	
CNHU1005R04	10.00	10.06	5.4	0.4	-	●	●	
CNHU1005R08	10.00	10.06	5.4	0.8	-	●	●	
CNHU1005R16	10.00	10.06	5.4	1.6	-		●	
CNHU1205	12.70	10.06	5.4	-	0.2			
CNHU1205R04	12.70	10.06	5.4	0.4	-	●		
CNHU1205R08	12.70	10.06	5.4	0.8	-	●	●	
CNHU1205R12	12.70	10.06	5.4	1.2	-	●		
CNHU1205R16	12.70	10.06	5.4	1.2	-			
CNHU1205R36	12.70	10.06	5.4	3.6	-	●		
CNHU1606	16.00	12.06	5.4	-	0.2		●	
CNHU1606R08	16.00	12.06	5.4	0.8	-		●	
CNHU1606R16	16.00	12.06	5.4	1.6	-		●	
CNHU1606R24	16.00	12.06	5.4	2.4				
CNHU1606R32	16.00	12.06	5.4	3.2				
CNHX1005R	10.00	10.06	5.4	-	0.2		●	
CNHX100504R	10.00	10.03	5.4	0.4	-			
CNHX100508R	10.00	10.06	5.4	0.8	-		●	
CNHU100516R	10.00	10.06	5.4	1.6	-		●	

-G : general cutting    -H : heavy cutting

◎ : first choice    ○ : second choice    ● : stock

CNHU : TSCN side milling    CNHX : F90CN10 shell end milling / face milling