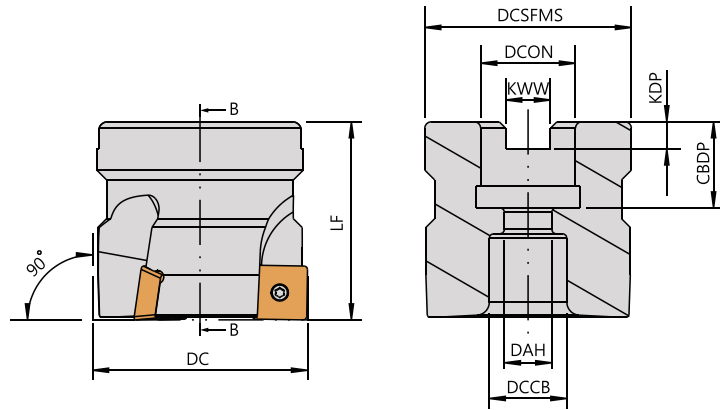
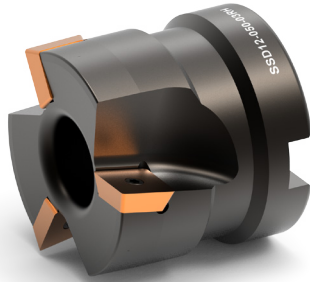
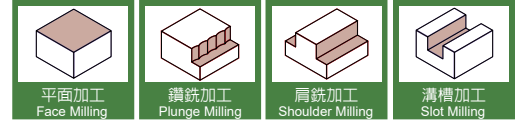


SSD12

殼形銑刀



▼多刃型/無墊片

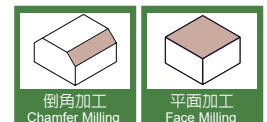
▼Recommended Inserts 建議刀片品牌: KENNAMETAL / KYOCERA

Standard with Coolant hole

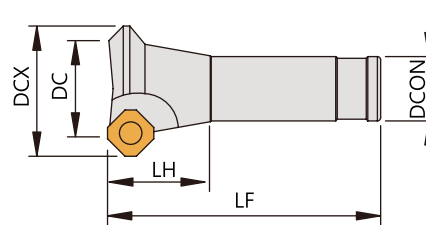
Order No.	Insert	Dimensions(mm)					Screw	Wrench
Right / Left		刀徑	長度	孔徑		刃數		
		DC	LF	DCON	DCON(inch)	I No.		
SSD12-040-04RH	SDPT1204 SDMT1204 SDMT1205	40	40	16	-	4	CS35119S	DBIT-T15
SSD12-050-05RH		50	40	22	-	5		
SSD12-063-06RH		63	40	22	1"	6		
SSD12-080-07RH		80	50	27	1"	7		
SSD12-100-08RH		100	50	32	1-1/4"	8		

E45SE12

倒角刀



Chamfer Milling Cutter



Order No.	Insert	Dimensions(mm)						Screw	Wrench
Right / Left		刀徑	柄徑	最大刀徑	長度	頭長	刃數		
		DC	DCON	DCX	LF	LH	I No.		
E45SE12-D25H02	SEHW1204AFTN SEKT1204	25	20	37	100	31	2	CS45090	DBIT-T15
E45SE12-D30H02		30	20	42	100	31	2		
E45SE12-D40J03		40	25	52	110	37	3		
E45SE12-D50K04		50	32	62	125	37	4		
E45SE12-D63M05		63	32	75	150	37	5		