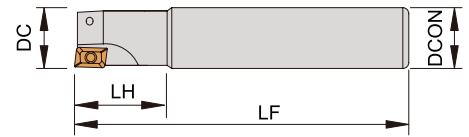
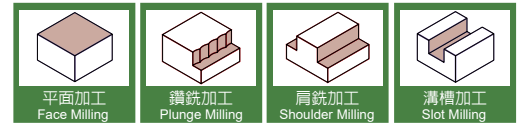


ER390

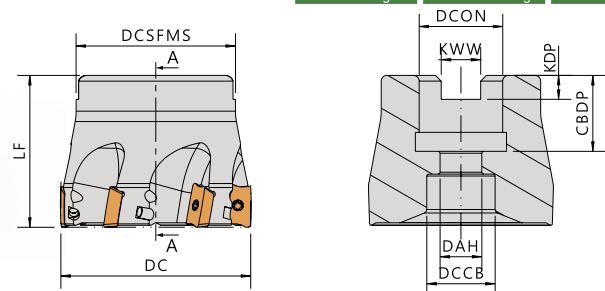
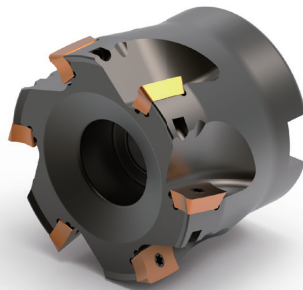


▼Recommended Inserts 建議刀片品牌: SANDVIK

Order No.	Insert	Dimensions(mm)					Screw	Wrench
		刀徑 DC	長度 LF	頭長 LH	柄徑 DCON	刃數 I No.		
ER390-162S16-100	R390-11T3	16	100	20	16	2	CS25055 / CS25052S	DT-8
ER390-162S16-150		16	150	20	16	2		
ER390-172S16-150		17	150	20	16	2		
ER390-203S20-110		20	110	25	20	3		
ER390-203S20-150		20	150	25	20	3		
ER390-213S20-150		21	150	25	20	3		
ER390-253S25-200		25	200	30	25	3	CS25065 / CS25062S	
ER390-254S25-120		25	120	30	25	4		
ER390-254S25-150		25	150	30	25	4		
ER390-264S25-150		26	150	30	25	4		
ER390-324S32-200		32	200	40	32	4		
ER390-325S32-150		32	150	40	32	5		
ER390-335S32-150		33	150	40	32	5		

R390

殼形銑刀

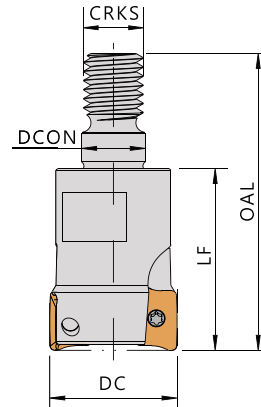
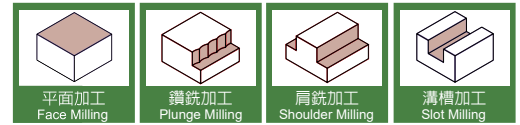
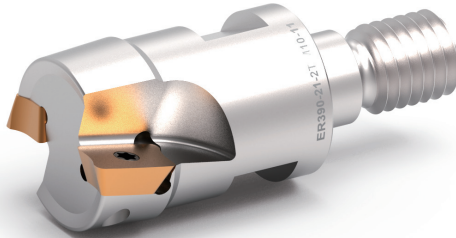


▼Recommended Inserts 建議刀片品牌: SANDVIK

Order No.	Insert	Dimensions(mm)				Screw	Wrench
		刀徑 DC	長度 LF	柄徑 DCON	刃數 I No.		
R390-F50-6T	R390-11T3	50	40	22	6	CS25065 / CS25062S	FT-8
R390-F52-5T		52	40	22	5		
R390-F63-8T		63	40	22	8		
R390-F66-7T		66	40	22	7		
R390-F80-8T		80	50	27	8		

ER390
鎖牙式端銑刀

Modular End Mill



▼Recommended Inserts 建議刀片品牌：SANDVIK

Order No.	Insert	Dimensions(mm)						Screw	Wrench
		刀徑 DC	柄徑 DCON	總長 OAL	長度 LF	螺紋 CRKS	刃數 I No.		
ER390-16-2T-M08-11	R390-11T3	16	8.5	43	25	M8	2	CS25055	FT-8
ER390-17-2T-M08-11		17	8.5	43	25	M8	2		
ER390-21-2T-M10-11		21	10.5	49	30	M10	2	CS25065	
ER390-26-2T-M12-11		26	12.5	57	35	M12	2		