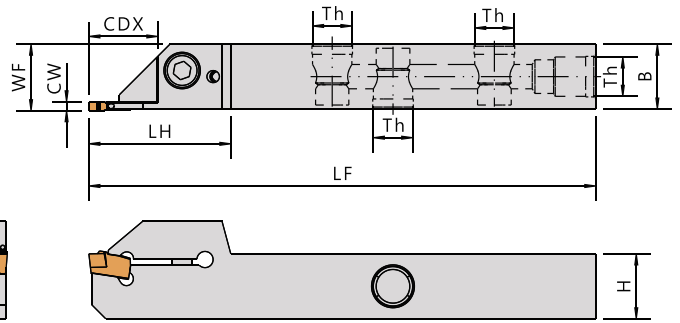
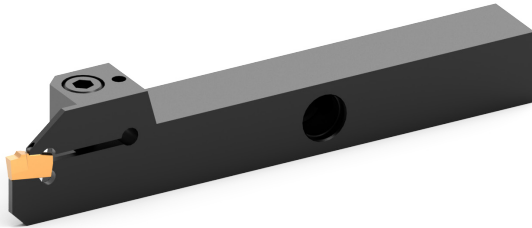
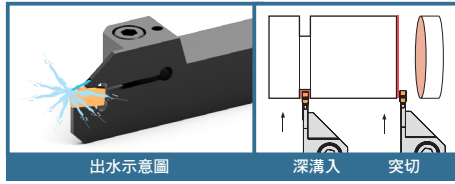
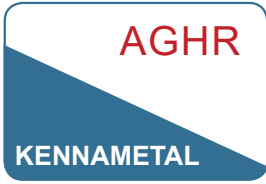


Grooving Tools 槽刀



▼Recommended Inserts 建議刀片品牌：KENNAMETAL

| Order No. | Insert | Dimensions(mm) | | | | | | | | Insert Screw | Coolant plug | Adapter | Wrench |
|-------------------|----------------|----------------|----|-----|------|----|----|-----|-------|--------------|-------------------|---------|--------|
| | | 柄高 | 柄寬 | 總長 | 寬度 | 頭長 | 切寬 | 切深 | 牙孔 | | | | |
| Right / Left | | H | B | LF | WF | LH | CW | CDX | Th | | | | |
| AGHR/L-1212K02-12 | A2022 | 12 | 12 | 125 | 12.4 | 30 | 2 | 12 | 5/16" | CSH0514 | CS9NN CS9-3003 | AA-NP | LW040 |
| AGHR/L-1616K02-12 | A2G02 | 16 | 16 | 125 | 16.4 | 33 | 2 | 12 | 1/8" | | CS9NQ CS9-3003 | | |
| AGHR/L-1616K03-16 | A2030 A3G03 | 16 | 16 | 125 | 16.4 | 37 | 3 | 16 | 1/8" | - | CS9NQ CS9-3003 | | |
| AGHR/L-1616K03-20 | | 16 | 16 | 125 | 16.4 | 41 | 3 | 20 | 1/8" | | CS9NQ CS9-3003 | | |
| AGHR/L-2525M03-26 | | 25 | 25 | 150 | 25.4 | 47 | 3 | 26 | 1/8" | | CS9NQ CS9-3003 | | |