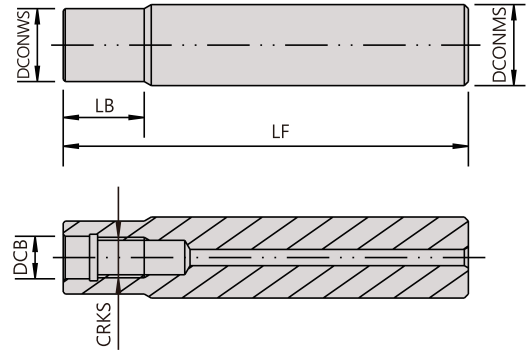
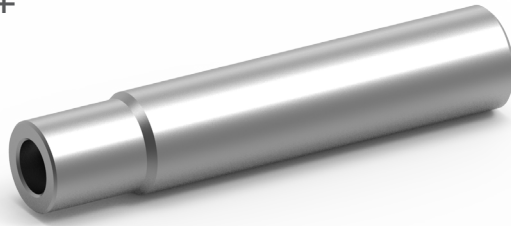


**HML**

## 高硬鋼刀桿



高硬鋼

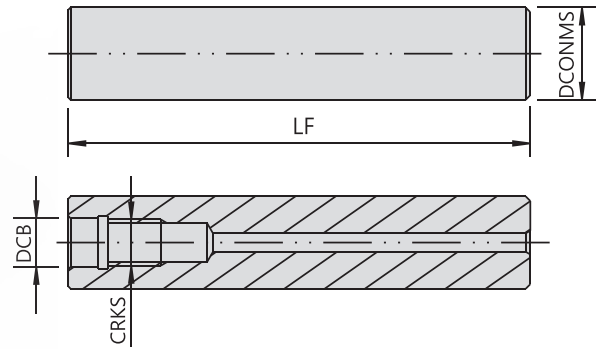
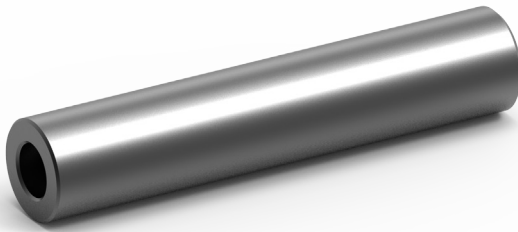
Harden alloy steel screw-in holder

Standard with Coolant hole

Order No.	Dimensions(mm)					
	機台夾持柄徑 DCONMS	長度 LF	螺紋 CRKS	連接孔徑 DCB	前端長度 LB	刀具安裝直徑 DCONWS
HML10M05-120	10	120	M5	5.5	10	8
HML12M06-100	12	100	M6	6.5	12	10
HML12M06-150		150				
HML16M08-100	16	100	M8	8.5	16	14
HML16M08-150		150				
HML20M10-100	20	100	M10	10.5	20	18
HML20M10-150		150				
HML20M10-200		200				
HML25M12-100	25	100	M12	12.5	25	23
HML25M12-150		150				
HML25M12-200		200				
HML25M12-250		250				
HML32M16-150	32	150	M16	17	32	30
HML32M16-200		200				
HML32M16-250		250				
HML32M16-300		300				

**HME**

## 鎢鋼刀桿



鎢鋼

Carbide screw-in holder

Standard with Coolant hole

Order No.	Dimensions(mm)			
	機台夾持柄徑	長度	螺紋	連接孔徑
Right / Left	DCONMS	LF	CRKS	DCB
HME08M04-100	8	100	M4	4.5
HME10M05-100	10	100	M5	5.5
HME10M05-150		150		
HME12M06-100	12	100	M6	6.5
HME12M06-150		150		
HME16M08-100	16	100	M8	8.5
HME16M08-150		150		
HME16M08-200		200		
HME16M08-250		250		
HME20M10-150	20	150	M10	10.5
HME20M10-200		200		
HME20M10-250		250		
HME25M12-150	25	150	M12	12.5
HME25M12-200		200		
HME25M12-250		250		
HME25M12-300		300		